

Lightsource Test Report

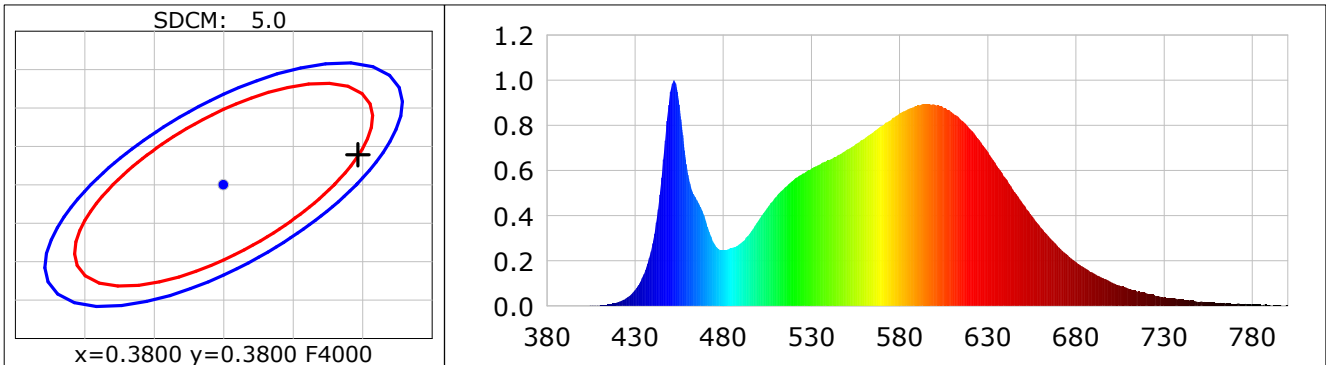
Product Information

Product Category: LED STRIP
Product Spec: 21059602440553
Manufacturer: TECSOLELED S.L.

Product Type: LED STRIP
Product Number: 283
Buyer: TECSOLELED S.L.

CIE Colorimetric Parameters

Chromaticity coordinates: $x=0.3897$ $y=0.3839$ $u(u')=0.2283$ $v=0.3374$ $v'=0.5061$
CCT: $T_c=3813K$ ($duv=0.00072$) Color Ratio: $R=0.189$ $G=0.777$ $B=0.034$
Peak Wavelength: 452.0nm Half Bandwidth: 18.8nm
Dominant Wavelength: 579.4nm Color Purity: 0.322
CRI: $R_a=82.4$, $avgR(1\sim14)=75.7$, $avgR(1\sim15)=75.6$ TM30: $R_f=83$, $R_g=95$
GAI: $GAI_BB_8=90.9$, $GAI_BB_15=98.7$, $GAI_EES=68.8$
R1 =81 R2 =89 R3 =95 R4 =81 R5 =81 R6 =86 R7 =85 R8 =62
R9 =6 R10=75 R11=79 R12=60 R13=83 R14=98 R15=74
Color Quality Scale: $Q_a=82.2$, $Q_f=82.5$, $Q_p=81.7$, $Q_g=91.9$
Q1 =81 Q2 =98 Q3 =79 Q4 =75 Q5 =80 Q6 =82 Q7 =84 Q8 =88
Q9 =98 Q10=89 Q11=86 Q12=84 Q13=83 Q14=72 Q15=75



Photometric Parameters

Luminous Flux: 2026.7 lm Efficiency: 160.21 lm/W Radiant Power: 6.040 W
Total mains efficacy: 148.35 lm/W Energy Efficiency Class: D (EU 2019/2015)

Electric Parameters

Voltage: 24.000V Current: 0.5271A Power: 12.65W
Power Factor: 1.0000 Frequency: 0.00Hz

Test Information

Scan Range: 380~800:1nm
Stabilization Time: 60 Sec ALC.: 1.0000
Max of Signal: 46612 (2196)

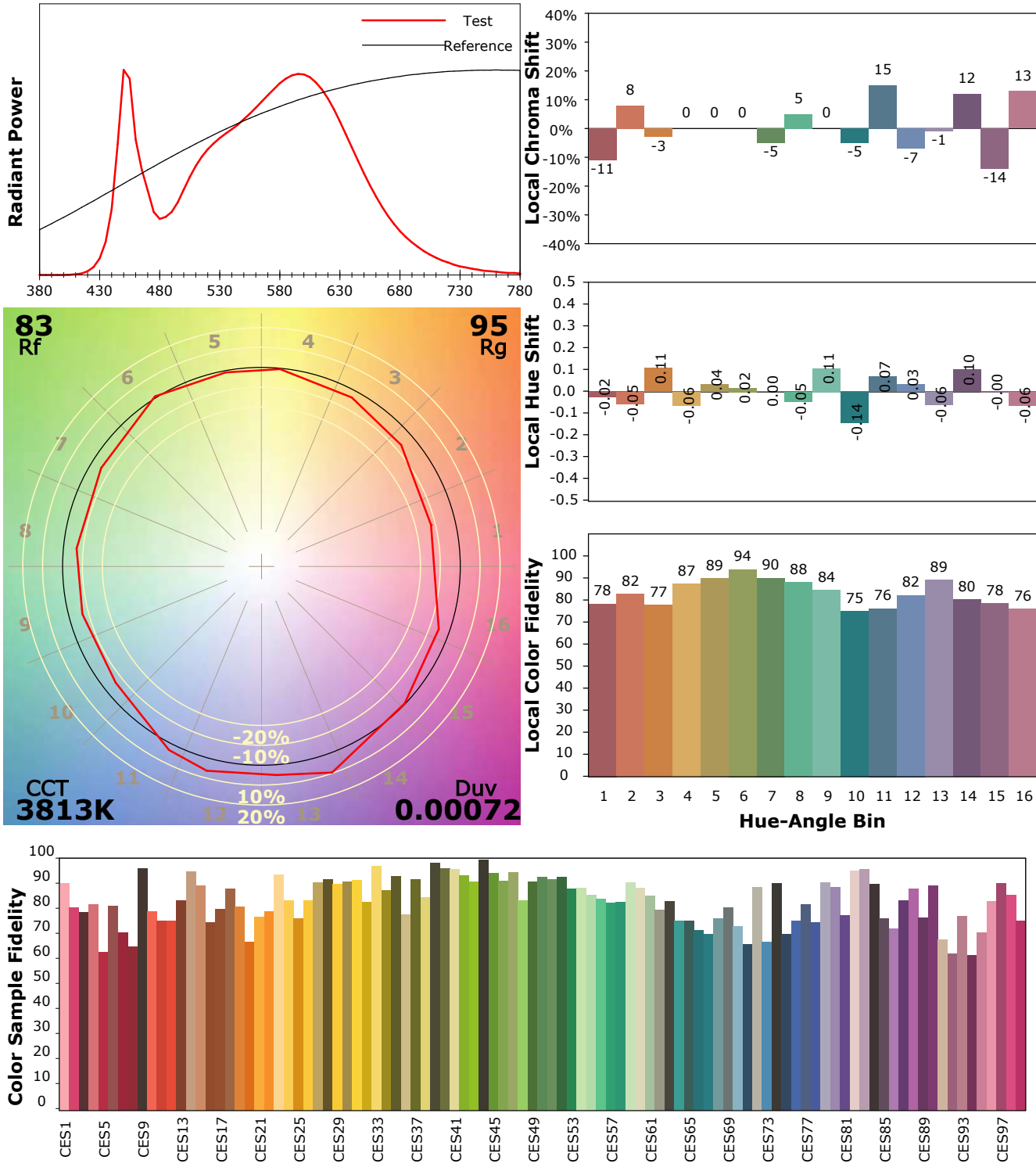
Photometric Method: sphere-spectroradiometer
Photometric Condition: Sphere diameter: 1.50m, 4PI
CCD Integration Time: 283.03 ms

IES TM-30-18 Color Rendition Report

Product Information

Product Category: LED STRIP
 Product Spec: 21059602440553
 Manufacturer: TECSOLED S.L.

Product Type: LED STRIP
 Product Number: 283
 Buyer: TECSOLED S.L.



Condition: Tx:20.6°C, Ti:19.8°C, R.H.:60%
 Test Lab: TECSOLED S.L.
 Operator: JORDAN GIL DIAZ

Test Device: Inventfine CMS-2S (Plus)
 Test Time: 2021-10-29 13:43:10
 Inspector: